

## 3-Jaws Punch Former

This Punch Former is attached with 3 jaws which can hold workpieces quickly and conveniently. It can also adjust center of 3 jaws.

### Main Parameters:

3 jaws hole diameter 16mm  
Min clamping diameter 2mm  
Max clamping diameter 70mm



OrderNo.287-6807

## Collet Punch Former

**NEW**

- ▣ Clamping diameter:  $\phi 2-\phi 20$
- ▣ Supply ER32 collete size: 4, 6, 8, 10, 12, 16, 20, 7Pcs in total
- ▣ For workpiece diameter smaller than 4mm, use shank 20mm/ER16 collet chuck
- ▣ It clamps workpiece quickly and steadily when processing without checking the center



OrderNo.287-6808

## Big Type Punch Former

### One-Way

▣ This Punch Former is applicable on surface grinder or universal grinder to clamp puncher within  $\phi 70$ mm for grinding various shapes.

### Main Parameters:

Center height: 150mm  
Clamping diameter in V-slot: 70mm  
Travel of V-block: 25mm  
Quantity of teeth: 24



OrderNo.287-6812

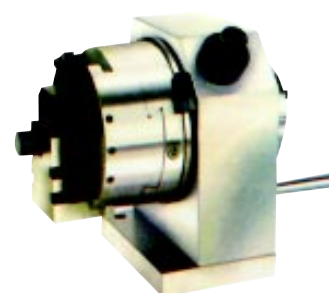
## Big Type Punch Former

### Two-Way

- ▣ This Punch Former is applicable on surface grinder or universal grinder to clamp puncher within  $\phi 70$ mm for grinding various shapes.
- ▣ It can shape quickly and precisely, with the moving function and fixing block for oval grinding.
- ▣ The fine tuning function can adjust center accurately. Using the fixing block and folding down the screw when mouse much, can grind oval workpiece conveniently.

### Main Parameters:

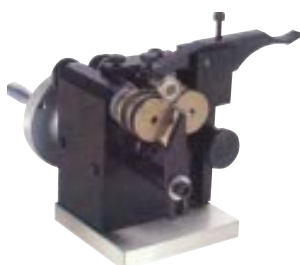
Center height: 150mm  
Clamping diameter in V-slot: 70mm  
Travel of V-block: 35mm  
Transversal travel of slide:  $\pm 35$ mm  
Quantity of teeth: 24



OrderNo.287-6813

## Punch Grinder

- ▣ The small punch grinder can process from diameter 0.5mm to 10mm.
- ▣ Grinding diameter: 0.5-6mm
- ▣ Right pressure must be put on the screw to avoid over pressure.



OrderNo.287-6804

## Motor Punch Grinder

Put the work on the rollers to realize non-centering grinding by motor, no need to set center before working. Available for long pin or punch. Equipped with magnetic sine plate, it can grinding various angle. With profile wheel to grind punch in different shapes.

### Main Parameters:

Length of workpiece: 20-120mm  
Outside grinding length :5-35mm  
Grinding diameter: 1.5-25mm  
Accuracy: 0.005mm  
Roller driving motor:  
110V/60Hz 129rpm or 220V/50Hz 108rpm



OrderNo.287-6806